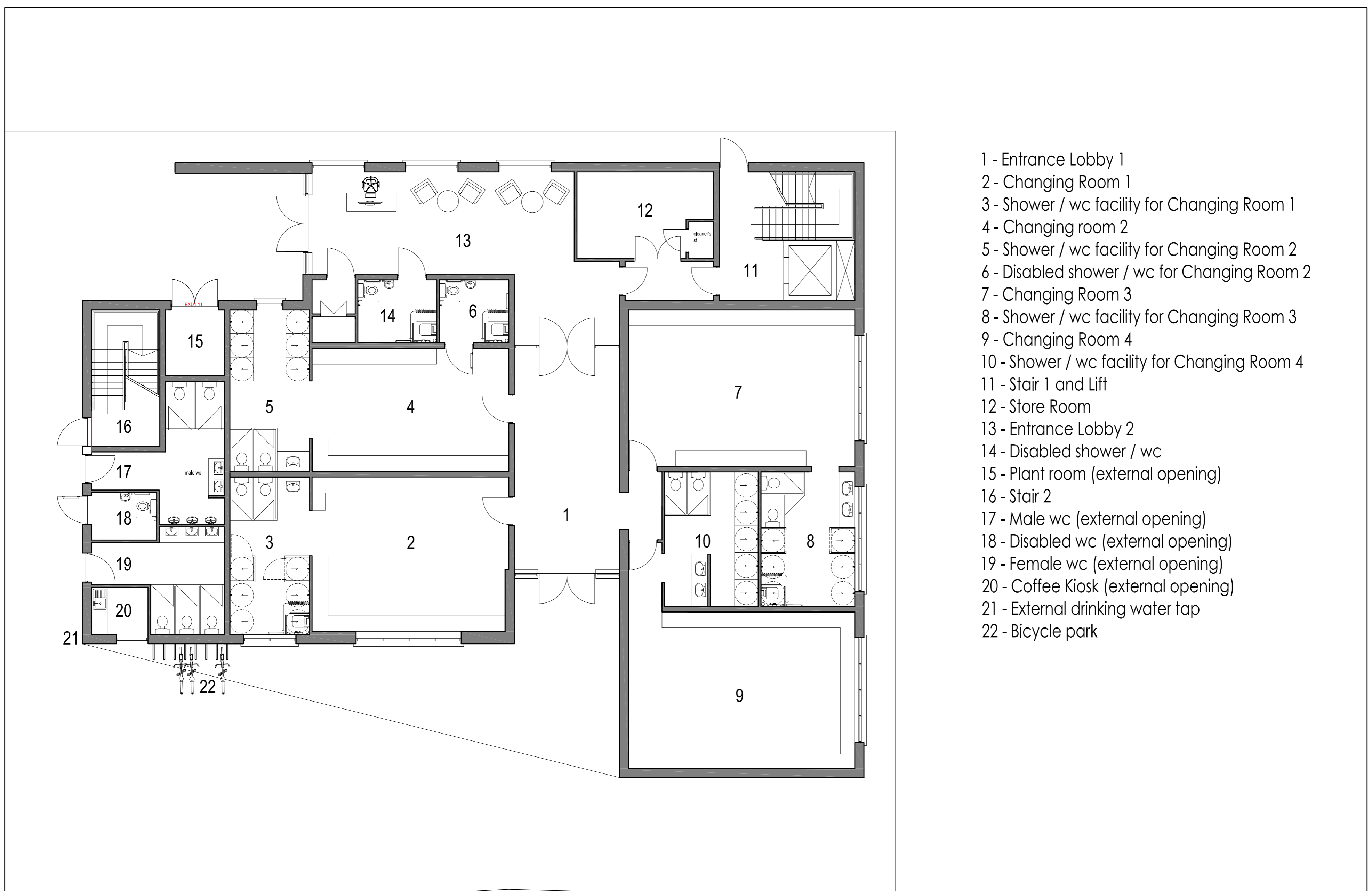


- 23 - Stair 1 and Lift
- 24 - Disabled wc
- 25 - Disabled wc
- 26 - Lobby
- 27 - Gym
- 28 - Multipurpose Room (suitable for sub-division)
- 29 - Kitchen
- 30 - Balcony
- 31 - Stair 2
- 32 - Gym Storage

Proposed First Floor Plan



- 1 - Entrance Lobby 1
- 2 - Changing Room 1
- 3 - Shower / wc facility for Changing Room 1
- 4 - Changing room 2
- 5 - Shower / wc facility for Changing Room 2
- 6 - Disabled shower / wc for Changing Room 2
- 7 - Changing Room 3
- 8 - Shower / wc facility for Changing Room 3
- 9 - Changing Room 4
- 10 - Shower / wc facility for Changing Room 4
- 11 - Stair 1 and Lift
- 12 - Store Room
- 13 - Entrance Lobby 2
- 14 - Disabled shower / wc
- 15 - Plant room (external opening)
- 16 - Stair 2
- 17 - Male wc (external opening)
- 18 - Disabled wc (external opening)
- 19 - Female wc (external opening)
- 20 - Coffee Kiosk (external opening)
- 21 - External drinking water tap
- 22 - Bicycle park

Proposed Ground Floor Plan

Proposed Floor Plans

O.N F.A J.M Wheeler RIBA CHARTERED ARCHITECTS <small>PRINCIPAL: J.M. WHEELER, RIBA CONSULTANT: F.A. WHEELER, MCIAT, JP., MBE.</small>		201 GARRON ROAD, BAY, GLENARIFFE, BALLYMENA, BT44 0RA <small>TEL: 02821771236 E:info@wheelerarchitecture.com</small>	
client	New Community Centre at Garron Road, Glenariffe	project	Proposed Floor Plans
project no.	1705	500-01	rev no.
drawn	1:100 @A1	scale	date
			JAN 2018